

# Louisa, Cindy, and Taylor

245 Nights of Comfort



## The Campaign for Ronald McDonald House

The United Counties of Stormont, Dundas and Glengarry







## About us

Ronald McDonald House Charities Ottawa (RMHCO) provides critical social infrastructure for families of children seeking treatment at the Children's Hospital of Eastern Ontario (CHEO). Built on the unceded territory of the Algonquin Anishinaabe Nation, RMHCO is located on the CHEO campus, a mere 167 steps away from CHEO's front door, offering families the peace of mind that their loved ones are never far from reach.

## Overview

Our House eliminates the financial burden, mental health strain, and stress and uncertainty that comes with caring for a sick child. We provide essential social infrastructure such as accommodation, laundry facilities, warm meals, and daily programming for families traveling from out of town to care for their children, as well as day-programming and in-hospital support services for all families.

RMHCO was one of the original 5 Ronald McDonald Houses built in Canada in 1984 and we will be the last to grow. While CHEO's patient population has continued to grow, our size has remained the same and we are turning away too many families. This expansion will allow us to serve all families who are required to travel for CHEO for care and will eliminate a very long waitlist for our services.

**By adding 22 bedrooms to our House, we will provide an additional 7,307 nights of comfort, equating to ~ \$2.1 million in additional family savings each year.\***

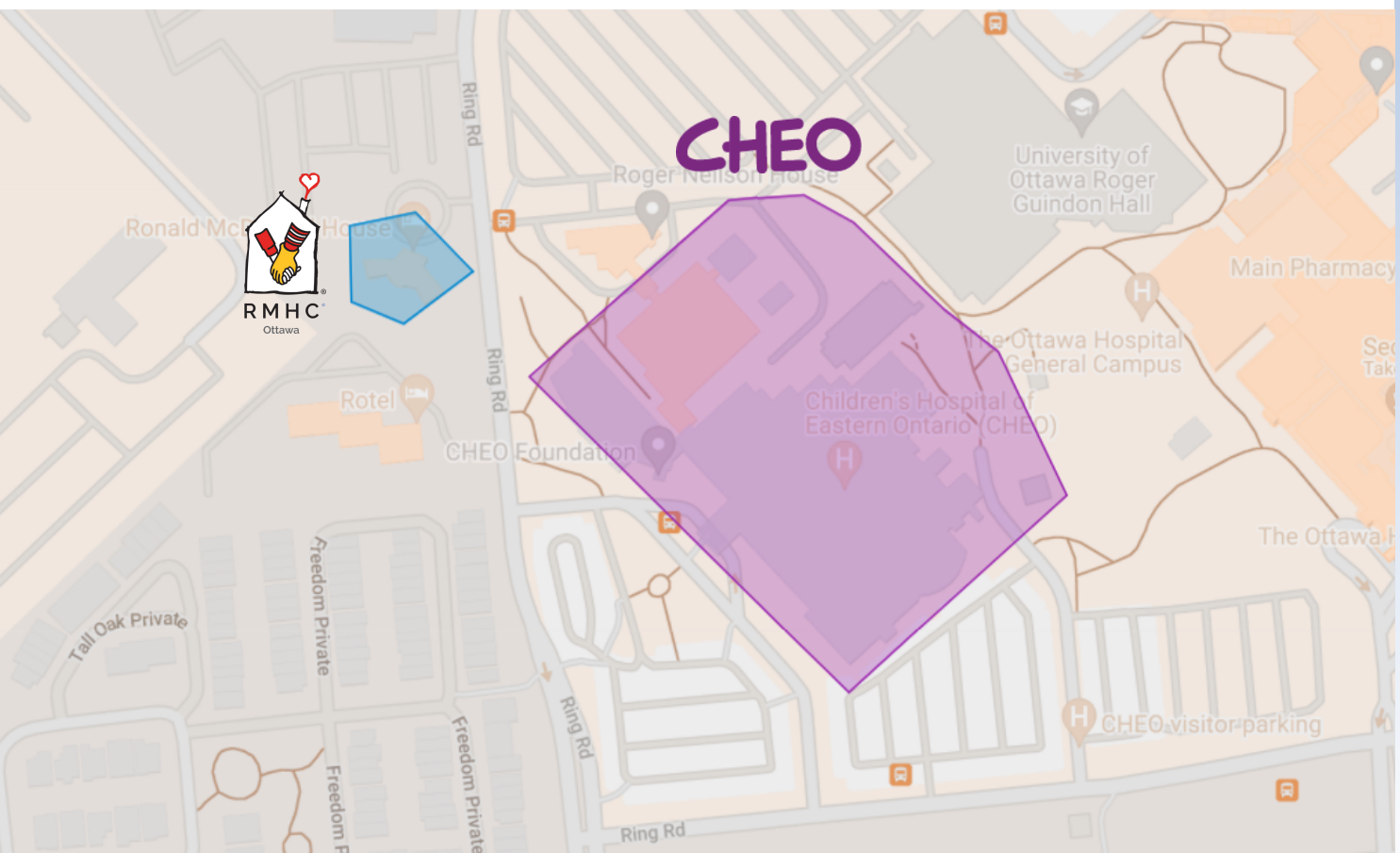
\*Based on an impact study conducted by RBC

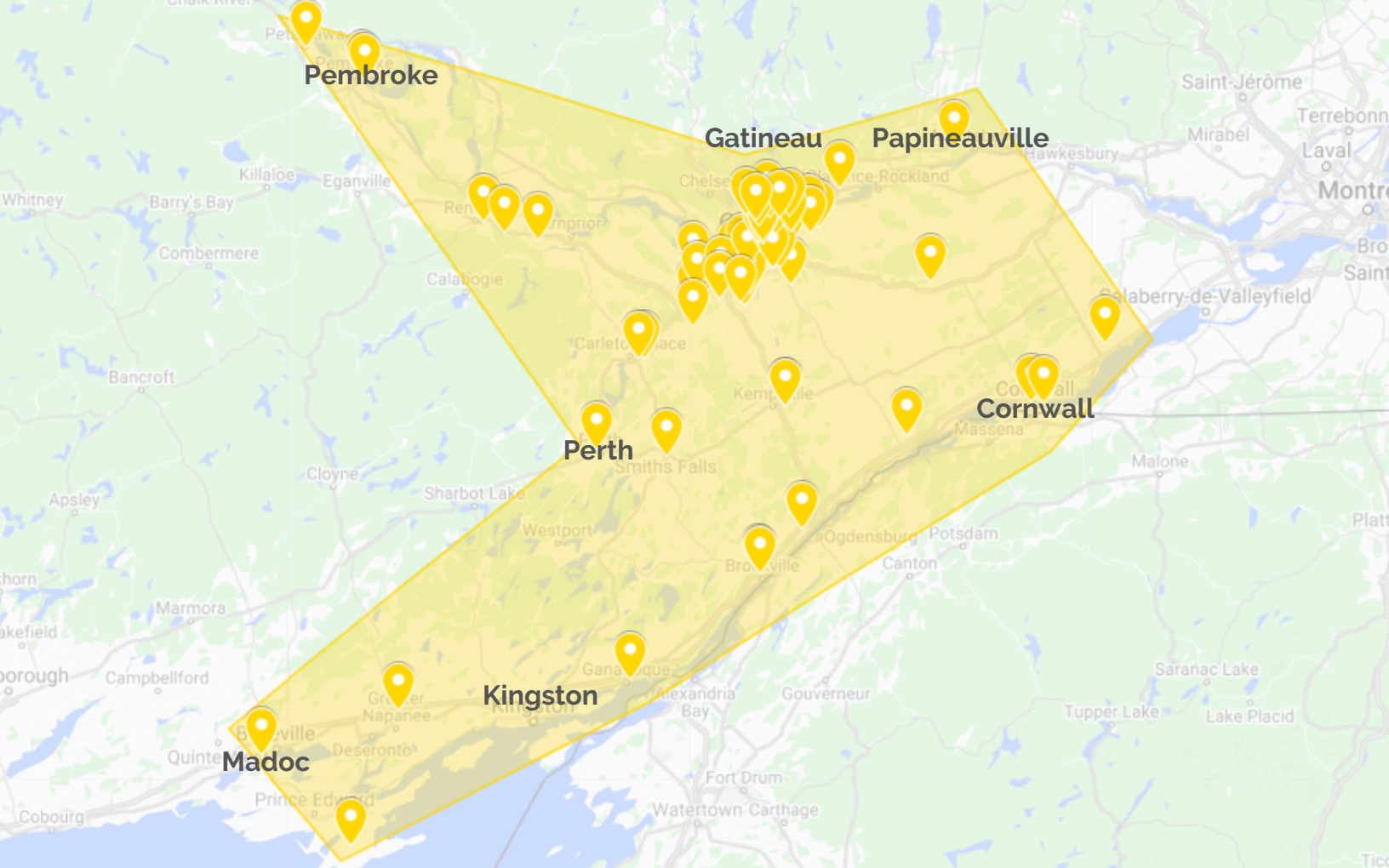
# Our House

217 families received single-visit or multiple-visit accommodation at RMHCO in 2019. Sadly, we also turned away well over 144 families due to a lack of space. Our new facility will grow by 22 rooms (22,000 square feet) accommodate 564 families per year, reducing the financial burden for all families traveling over 80 km to receive care at CHEO. CHEO depends on RMHCO to accommodate the families of patients coming from rural, northern, and Indigenous communities.

Examples of some of the communities we serve include Akwesasne, Alexandria, Brockville, Cornwall, Kirkland Lake, North Bay, Nunavut, Sudbury, Timmins, and parts of Quebec. In 2019, we welcomed families from 183 different communities.

Our only criteria is that families live a minimum of 80 km away (i.e. not a commutable distance). This is the largest minimum distance criteria of any RMH in Canada. Expanding our House will allow us to reduce this distance to support more families that live far from CHEO, this will include families from your community.





# McDonald's Canada

McDonald's restaurants across our catchment area were the first major donor to commit to this project, with a \$500,000 pledge in addition to the \$2,200,000 grant we will receive from RMHC Canada. This is over and above their annual fundraising to support our operations.

Our catchment area of McDonald's Owner/Operators spans Ontario and parts of Quebec, with support from areas all over Ottawa, and places like Cornwall, Brockville, Carleton Place, and Gatineau. There are 15 dedicated local Owner/Operators who fundraise year-round for RMHC Ottawa, with initiatives across their 71 restaurants.

McDonald's is our Founding and Forever Partner. They have supported us since the day our doors opened and their passion and enthusiasm for our mission is clear.



# Stormont, Dundas & Glengarry

RMHC Ottawa serves the patient population of the Children's Hospital of Eastern Ontario (CHEO). We serve all families who are required to travel to Ottawa so their child can receive specialized medical care. Unfortunately, the demand is far greater than we can currently meet, and it is critical that we expand to address our growing waitlist.

Since our House has opened, we have served 228 families from your community for a total of 10,458 nights of comfort. Families from Alexandria, Maxville, Lancaster, and more have called our House 'home' making up 4.27% of our families in the last 37 years.

Families like the Cole family, who spent 478 nights at RMHCO while 7-year-old Jesce sought treatment for cancer. The Cole family came to our House at the beginning of the pandemic and made RMHCO their home over birthdays, holidays, and more. Sadly after 478 days at our House, the Cole family was moved to Roger Nielson House across the street, and Jesce passed away in February of 2021.



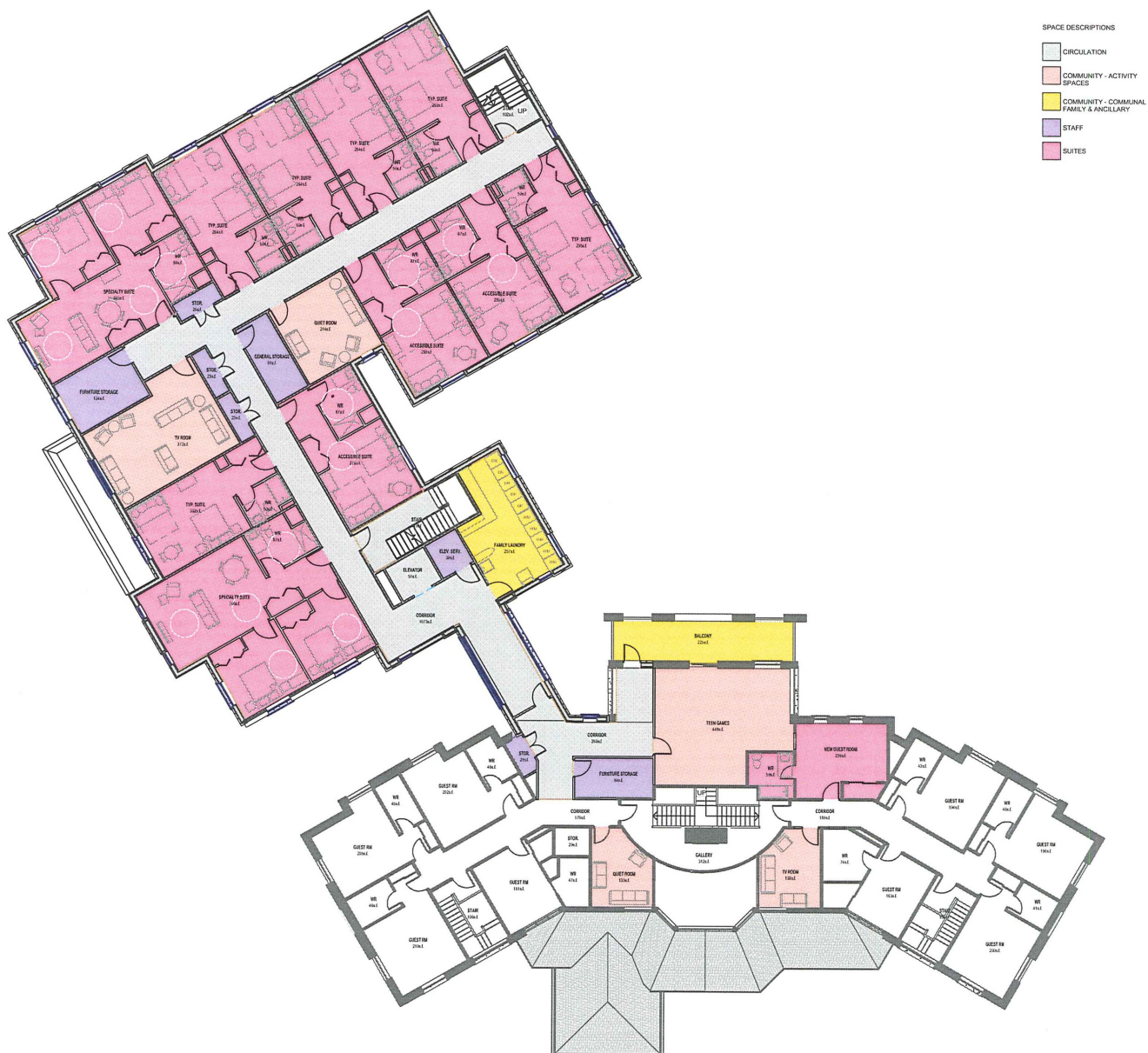


# Our Expansion

This is an \$18.9 million zero net carbon project that includes careful forecasting of the likely increases in construction costs while we plan, as well as all appropriate contingencies.

**The expansion will be approximately 25,000 square feet in size and will add 22 new bedrooms to the existing 14.**

With the completion of this net-zero project, we will be able to help an additional 347 families each year.







## Our Ask

**We are asking the United Counties of Stormont, Dundas, and Glengarry to consider a \$250,000 gift in support of the Campaign for Ronald McDonald House.** We will work closely with you to recognize your generous gift appropriately in our new House.

Our project cost is \$18.9 million. We have raised \$5.5 million to date which includes commitments from McDonald's Canada, Ronald McDonald House Charities Canada, and our Board of Directors. We have submitted a \$9.4 million grant application to Infrastructure Canada's Green and Inclusive Community Building program in support of our net-zero project. Our road map to success is detailed below.

Gift Levels	Gifts Needed	Gift Size	Level Total	Cumulative Total
<b>GlCB Grant, if successful</b>		\$9,400,000	\$9,400,000	\$9,400,000
<b>Transformational Gifts</b>	1	\$2,500,000	\$2,500,000	\$11,900,000
	1	\$2,200,000	\$2,200,000	\$14,100,000
	2	\$1,000,000	\$2,000,000	\$16,100,000
<b>Major Gifts</b>	2	\$500,000	\$1,000,000	\$17,100,000
	2	\$250,000	\$500,000	\$17,600,000
	6	\$100,000	\$600,000	\$18,200,000
	<b>Many</b>	<b>Various</b>	\$700,000	\$18,900,000



# **We are a lifeline for small communities.**

The average family stays at RMHCO for 11 nights. Our House offers a cost savings of \$3,157 for these families that otherwise would have been paid out of pocket.

## **With your support..**

As leaders in a community that RMHCO has served for more than 37 years, we look forward to changing the lives of children and families alongside the United Counties of Stormont, Dundas, and Glengarry.

# **Thank You**

**Please contact Christine Hardy, CEO at [christine@rmhottawa.com](mailto:christine@rmhottawa.com) or 613-807-6655 for more information.**

